



**SUPER QUICK
BLENDING**



**180 WATT
POWERFUL MOTOR**



**FOOD GRADE
METAL**



**RUST
FREE**



**CORD LENGTH
2 METRE**




**DUAL
SPEED**

SUJATA

CARE
1800-1022-758



Scan to visit
www.sujataappliances.com


SUJATA[®]
BLENDCRAFT

**OPERATING
MANUAL**

WITH WARRANTY CARD

READ THE INSTRUCTIONS CAREFULLY
BEFORE OPERATING THIS UNIT.





**BUTTER, CREAMS, PUREES,
SHAKES, SMOOTHIES, SOUPS,
CHUTNEYS AND MORE**



TABLE OF CONTENTS

IDENTIFICATION OF PARTS	4
INTENDED USE	4
SAFETY INSTRUCTIONS	5
SAFETY OF OTHERS	6
INSPECTION AND REPAIRS	7
ELECTRICAL SAFETY	7
BEFORE YOU BEGIN	7
INSTRUCTIONS FOR USE	8
CLEANING AND MAINTENANCE	8
AFTER USE	9
DISCLAIMER	10
PROTECTING THE ENVIRONMENT	10
SPECIFICATIONS	10
WARRANTY	11

Congratulations on the purchase of your new **SUJATA appliance**.
You can find further information about our products on our website.

<https://www.sujataappliances.com/>

IDENTIFICATION OF PARTS



INTENDED USE

- SUJATA Commercial Hand Blender has been designed for blending food and beverage ingredients.
- **Read and follow the operating instructions carefully** before using the appliance and **retain this manual for future reference.**
- Use this appliance with original parts only.
- Check the parts of your appliance and familiarize yourself with the functional aspect of each of these parts.

SAFETY INSTRUCTIONS

- Make sure that the appliance is switched off before connecting to or disconnecting from the power supply.
- Do not use the appliance outdoors.



CAUTION!

Always protect the motor unit from water or excessive humidity.

Do not place it in the dishwasher.

- Do not operate the appliance if your hands are wet.
- Do not operate the appliance if you are barefoot.
- Guide the power supply cord neatly so that it does not hang over the edge of the blade or a worktop and cannot be caught accidentally or tripped over.
- Keep hands, hair, clothing, and utensils away from blade and mixing container while operating the appliance to prevent the possibility of severe injury to persons and/or damage to the Blender.
- A spatula may be used but only when the unit is not operating.



WARNING!

Blade is sharp. Handle carefully.

Care is needed when handling the blade, especially while removing and cleaning it.

- Do not operate the appliance if it is damaged in any manner. Contact customer care immediately to avoid any hazard.
- Never leave the appliance unattended while it is switched on! We recommend that the appliance is never switched on longer than necessary to process the ingredients.
- Disconnect the appliance from the power supply when not in use and before cleaning.
- Do not operate at no load. Do not burden the motor with heavier load.
- Do not place on or near a Hot Gas/Induction/Hot Plate/Gas Stove or Electric Burner, or in a heated Oven.
- Keep the power supply cord away from heat, oil and sharp edges.
- When mixing liquids, especially hot liquids, use a tall container or make only small quantities at a time to reduce spillage and possibility of injury.

SAFETY INSTRUCTIONS



Never pull the power supply cord from the wire to disconnect the plug from the socket. Grip the power plug firmly to unplug the appliance.

WARNING!

Risk of scalding!

- Take care when processing hot food. **Hot food may splash during processing.** Never place the blender foot on hot surfaces or use in very hot food. **Leave boiling food to cool down for at least 5 mins or below 80°C (176°F) before processing.**
- Before using the hand blender in a cooking pot, take the pot off the gas stove/hot plate/induction/electric burner.
- Do not immerse the blender, plug or cord in water or in other liquids to protect yourself against electrical hazards.
- Do not run appliance for more than specified duration at a stretch. Give the unattended machine 15 minutes rest before starting it again.

SAFETY OF OTHERS

- **Do not allow children or pets to come near the work area or touch the appliance or power supply cord.** Close supervision is necessary when the appliance is used near children or pets.
- The appliance is not intended for use by persons (including children) with reduced physical, sensory or mental capabilities, or lack of experience and knowledge, unless they are under supervision or given instructions concerning use of the appliance by a person responsible for their safety.
- Protect the appliance from insecticide sprays, as it could be harmful to the food, as well as damaging for the plastic materials used.

INSPECTION AND REPAIRS

- Do not use the appliance if any part is damaged or defective.
- Have any damaged or defective parts repaired by an authorized service facility.
- Before use, check the power supply cord for signs of damage, ageing and wear.
- Switch on the appliance for few seconds to ensure that the motor works properly. If the appliance used for the first time or after a long interval then make sure that the shaft rotates freely.
- Always use genuine spare parts.
- Contact Sujata's Customer Care to get product repaired by Authorized service facility.
- If the power supply cord or mains plug is damaged or defective, it must be repaired by an Authorized service facility in order to avoid hazard. **Do not cut the power supply cord and do not attempt to repair the appliance yourself or through non-authorized service centre.**

ELECTRICAL SAFETY

WARNING!

To avoid the risk of electric shock, do not immerse the cord, plug or motor unit in water or any other liquid.

- Do not operate the appliance if you are barefoot.
- Always check that the mains voltage corresponds to the voltage on the rating as specified.
- Operate the appliance during steadier voltage stretches. Wide voltage fluctuations may affect grinding quality, even though the motor is safe.

Note: Always unplug the **SUJATA BLENDCRAFT** Hand Blender before cleaning the metal blade.

- Check the appliance for damaged or defective parts. Check for breakage of parts, damage to switches and any other conditions that may affect its operation
- SUJATA suggests that you wipe the unit with a clean, damp cloth to remove any dirt or dust. Place the metal blade end of the hand blender under running water to rinse it. Dry thoroughly with soft absorbent cloth. Read all instructions thoroughly for detailed operating procedures.
- If any smoke emanates from the appliance or motor stalls for any reason whatsoever, switch off the machine and send it to the authorised service provider for the needful.

INSTRUCTIONS FOR USE

- Clean the Blender shaft and the container. Keep some space around the appliance.
- Fill the food to be blended in the container.
- Plug in. Hold the power handle steady. Switch the appliance on by pressing the Low or High-speed button as needed.
- Immerse the blade guard completely in the ingredients.
- Blend the ingredients by moving the appliance slowly up and down and in circles.
- After you have completed blending, release the switch button, then unplug from outlet.
- While using the appliance, place it on an even surface at a height which one can check the rotary action during blending and circulation of ingredients.



CAUTION!

To prevent splattering, be careful **NEVER TO REMOVE THE BLENDER FROM THE LIQUID DURING OPERATION.**

Use High-speed for liquid ingredients, and hold the protective blade guard at the bottom of the mixing container to prevent splattering.



Note: Use crushed ice (not whole cubes) for best results.

CLEANING AND MAINTENANCE

WARNING!

Switch the appliance off and unplug it before cleaning or repair. Be careful when cleaning the blade; it is sharp. Use a brush.

Do not immerse the plastic housing in washing solution, rinse water off. Prevent liquid from running into plastic housing by wringing (extremely wet, soaked) all excess moisture from clothes or sponges before using them.

1. Rinse the exterior and interior stainless steel portion of the BLENDCRAFT under running water. Scrub and flush the exterior and interior stainless steel portion to dislodge and remove as much residue as possible.

CLEANING AND MAINTENANCE

2. Wipe down the exterior of the plastic housing and the stainless steel portion of the BLENDCRAFT with damp soft cloth or sponge dampened with the washing solution.
3. **Immerse approximately 3/4 of the length of the stainless steel portion** in a container of the washing solution and run for 30 seconds on High.

CAUTION!

In order to minimize the possibility of scalding, temperature of the washing solution and rinse water must not exceed 115°F (46°C).

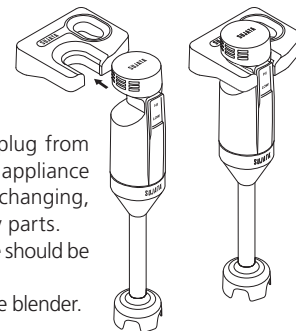
4. Repeat steps two (2) and three (3) using clean rinse water in place of the washing solution.
5. Wipe down the exterior of the plastic housing and the stainless steel portion of the hand blender with soft cloth or damp sponge.
6. Always clean the appliance immediately after use. Do not let food dry on to the blades as this will make cleaning difficult and unhygienic.

Note: If a piece of food becomes lodged in the protective guard surrounding the metal blade, follow the safety instructions noted below:

- Release the power button and unplug the unit from the electrical outlet.
- Once the power source has been disconnected, use a spatula or brush to carefully remove the food lodged in the blade guard. **Avoid injury, the blade is sharp, do not use your fingers to remove lodged objects.**
- After the lodged food has been removed, plug the unit back into its power supply and continue processing.

AFTER USE

- Switch off the appliance before cleaning.
- Switch off and remove the plug from the socket before leaving the appliance unattended and before changing, cleaning or inspection of any parts.
- When not in use, the appliance should be stored in a dry place.
- Use the wall mount to stow the blender.



CAUTION!

Children should not have access to stored appliances.

RECIPE FOR PINEAPPLE SMOOTHIE

INGREDIENTS

- 3 Cups Frozen pineapple (or fresh, peeled, and cut in small pieces)
- ½ Banana
- ¾ Cup Water
- ½ Cup milk (Almond milk or Oat milk)
- 4-5 Ice cubes
- 1 ½ tablespoon fresh squeezed lime juice (lemon Juice)

Procedure

Place all ingredients except 1 cup frozen pineapple in a blender. Blend until smooth, stopping and stirring, as necessary.

Add the final cup of frozen pineapple and blend again. Consume immediately.

On Time: - 1 Min, Off time: - 30 sec

Number of Operation: - 2 cycle

Run on High Speed



RECIPE FOR COLD COFFEE

INGREDIENTS

- 2 tablespoons Coffee
- 3 tablespoons sugar (adjust to taste)
- 1/4 cup water (hot)
- 2 cups chilled milk
- 3 to 4 ice cubes (optional)
- 2 scoop vanilla ice cream (optional)

Procedure

Heat up 1/4 cup water in a pan or microwave. Add instant 1 & 1/2 to 2 tablespoons instant coffee to it. You can adjust the amount of coffee powder to taste and how strong coffee you prefer.

Add in 3 tablespoons sugar (adjust to taste).

Now add 2 cups chilled milk. Also add 3 to 4 ice cubes (optional).

Add the prepared coffee-sugar mix into the blender. At this point, you can use vanilla ice cream if you want.

Blend for a few seconds until everything is mixed and the coffee is frothy.

On Time: - 1 Min, Off time: - 30 sec

Number of Operation: - 3 cycle.

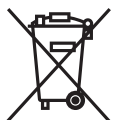
Run on High Speed



DISCLAIMER

- Updates to hardware components are made regularly. Therefore, some of the instructions, specifications and pictures in this guide may differ slightly in your particular situation.
- All items described in this guide are for illustration purposes only and may not apply to a particular situation. No legal right or entitlements may be obtained from the description given in this manual.

PROTECTING THE ENVIRONMENT



This product is classified as Electrical and Electronic Equipment. Should the time come for you to dispose of this product please ensure that you do so in accordance with ROHS directive and in compliance with local laws relating to this directive.

WARNING!

1. Children should be supervised to ensure that they do not play with the appliance.
2. Do not allow children to use the Hand Blender without adult supervision.

SPECIFICATIONS

Model Type & No.	BLENCRAFT / BLACK
Motor Rating	Heavy duty, 180 Watt on maximum load
Power Supply	230 V, AC 50Hz
Speed Control	2 Speed Toggle action Switch
Motor Speed	Maximum speed at No Load. 18000 R.P.M.
Flex Cord	P.V.C. approx. 2.00 meters usable with 2.5 Amp. 2 pin plug.
Weight with Carton	1270 gm
Dimensions (in mm)	118 x 118 x 410




**ONE YEAR
WARRANTY**



SUJATA BLENDCRAFT is warranted against manufacturing defects for a period of **ONE YEAR** from the date of purchase. Within this period, any defective unit will be repaired or replaced at manufacturer's option free of cost subject to the unit being **delivered to our authorized service centre at customer's cost.**

The warranty does not cover wear and tear of plastic/rubber components, bush etc., and damages resulting from accident, mishandling or negligence on the part of the customer or non-compliance with the instructions in the operating manual or if the mechanism is tampered with by the customer or any unauthorized person other than our service personnel.

The warranty card duly stamped and signed by the dealer along with the cash memo should be provided to the authorized service centre, otherwise the warranty will be treated as invalid. Liability for consequential damages or loss is neither accepted nor implied under the warranty.

	Sr. No. <input type="text"/>	Checked by <input type="text"/>
Cash Memo No. <input type="text"/>	Date <input type="text"/>	
Customer's Name & Address <input type="text"/>		
<input type="text"/>		
Customer's Telephone <input type="text"/>		
<input type="text"/>		
Signature of the Dealer <input type="text"/>	RUBBER STAMP OF THE DEALER	
<input type="text"/>		