

OPERATING MANUAL

SUJATA[®]

POWERMATIC
JUICER

A QUALITY
PRODUCT



INTERNATIONAL
SPECIFICATIONS



Before operating this unit, read the instructions carefully.

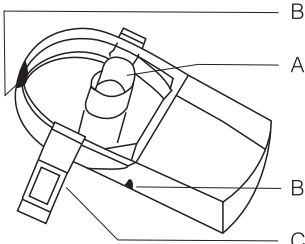
IDENTIFICATION OF PARTS

JUICER

1



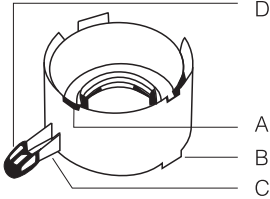
2



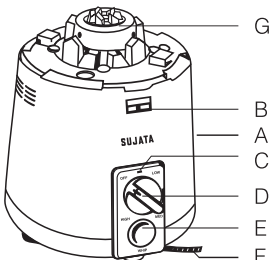
3



4



5



1. Plunger

2. Juicer Cover

A. Feeder Opening

B. Locks

C. Clamps

3. Cutter Spinner (Filter)

4. Juice Container

A. Locking Grooves (for Juicer Cover)

B. Lock (for Motor Unit)

C. Spout

D. Spout Cover

5. Motor Unit

A. Motor Housing

B. Slots for holding Clamps
(of Juicer Cover)

C. Indicator Light

D. Speed Knob

E. Whip Button

F. Mains Cord

G. Driving Coupler

made up of (1) Driving Base and
(2) Driving Gear (set of teeth)

6. Driving Gear (extra)

7. Cleaning Brush

8. Pulp Container

A. Locking Grooves

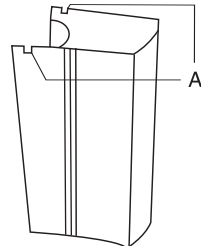
6



7



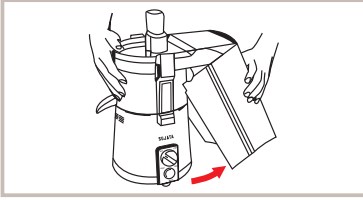
8



HOW TO USE

Before using dismantle each part and learn their disassembly and assembly methods.

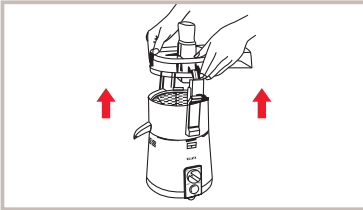
DISASSEMBLY



Remove the pulp container by slightly lifting it to unlock it from the juicer cover.



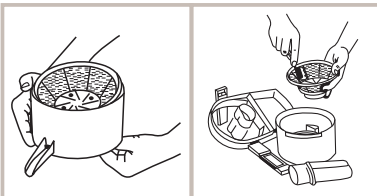
Pull out the clamps which are on both sides of the motor housing.



Remove the juicer cover.



Lightly lift the juice container with both hands. The filter will come out with it.

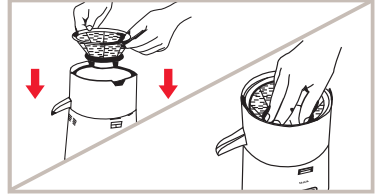


The filter can be easily separated from the juice container by pushing it up from the base. Dismantle each part. Wash all parts well with water **except the motor housing**.

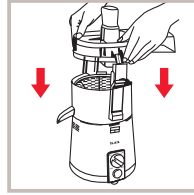
ASSEMBLY



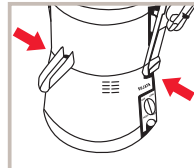
Place the juice container on motor housing ensuring that its locks match the locking grooves located at the top of motor housing.



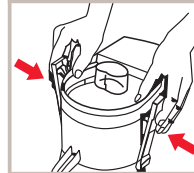
Put cutter spinner (filter) in juice container. Now lightly press the cutter spinner to ensure that it is properly fixed in position.



Place the juicer cover (on to the juice container) ensuring that its locks match the locking grooves of the juice container.

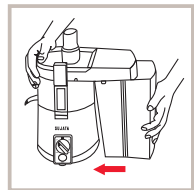


Fit lower ends of both the clamps (of juicer cover) into the slots provided on both sides of the motor housing properly.



Now firmly close the clamps from their top ends. (all the time ensuring that lower ends of the clamps remain properly fit into the motor housing).

If the clamps are not fixed properly, the juicer cover will get dislodged and cutter spinner may come out with great force and cause severe injury to the user and people around.



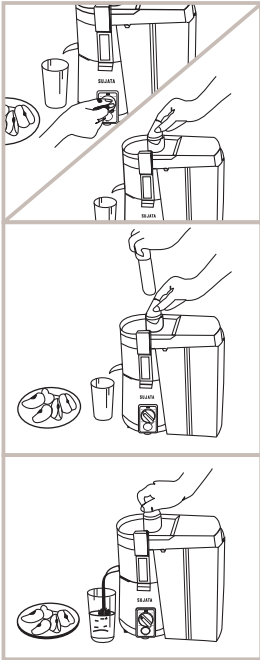
Put pulp container in locked position by pushing it.

HOW TO USE

EXTRACTING THE JUICE

For extracting juice from vegetables / fruits having large and hard seeds like Amla, Peach etc. take out / remove the seeds first. **Only after removing the seeds, juicing is to be done otherwise the cutter spinner will get damaged and juicer dismantled resulting in an accident which may cause severe bodily injury to the user and people around.**

Fruits like Banana, Papaya etc. (whether ripe or unripe) should never be juiced because of non juicy nature of their pulp. **If they are juiced, cutter spinner will get damaged and juicer dismantled resulting in an accident which may cause bodily injury to the user and people around.**



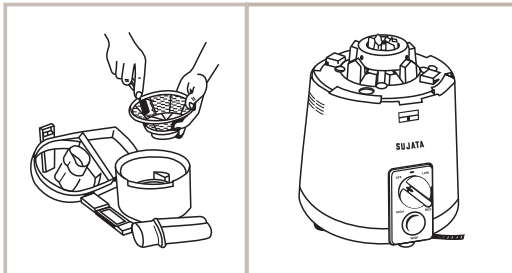
Place a glass under spout to collect juice and switch the juicer on to 'LOW' speed.

Now put the fruit and vegetable into feeder opening.

Use the plunger because most fruits and vegetables need additional help.

The fruit is completely crushed by the cutter. The juice and pulp are automatically separated. Transparent juicer cover lets you know when it is time to empty pulp container.

HOW TO CLEAN



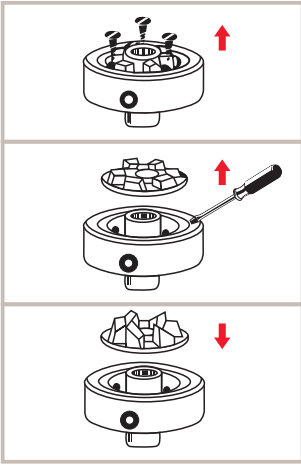
Disconnect Power Supply.

Follow the instructions for disassembly of juicer. Rinse each part in cold or lukewarm water. Cutter spinner also works as the filter, so rinse this especially well. After rinsing, wipe the water off and let it dry before storing.

To clean the motor housing, simply wipe with damp cloth and dry. **Never immerse motor housing in water.**

HOW TO CHANGE THE DRIVING GEAR

A spare set of "Driving Gear Teeth and screws" is being provided alongwith. If proper care is taken to ensure that the **motor stops completely before mounting, removing or replacing the jar**, the Driving Gear may never get damaged. In case carelessness occurs and Driving Gear Teeth get worn off, it can be easily replaced at home.



Unscrew the three screws located amidst the teeth of Driving Gear.

Lift up the torn set of teeth from the Driving Base by putting a screw driver in any of the two grooves provided.

Clean the top surface of the driving base, with a dry cloth. Put a new set of **Driving Gear Teeth** and tighten with screws. Use either the old screws or the new ones being supplied alongwith. Screws of a different size may damage the unit.

CARE AND MAINTENANCE

- Read all instructions carefully and be familiar with your machine before use.
- Before first use or after long unuse, check to see if shaft rotates smoothly.
- The air ventilation holes at the bottom of the motor unit may get blocked if the machine is used on any thin plastic sheet, cloth or paper etc. They get sucked up, blocking the ventilation holes and causing excessive heating up of the motor.
- For optimum efficiency, the machine should be operated at the specified voltage only. Wide voltage fluctuations affect the processing of food adversely.
- Do not attempt to repair the machine at home or allow any unauthorized person to do it either. In the event of your machine needing attention take it to your dealer.
- Avoid overloading the machine with extra heavy load. If after loading the machine and switching on the electric supply, the motor does not start or runs at a very low speed, check if the material being processed is too much. If so, reduce it and proceed again.

PRECAUTIONS

- Always use 3 pin plug for connecting the electrical supply. After every use, disconnect electric supply by turning off the switch and removing the plug from the socket.
- Do not let cord hang over the edges of tables or counter or touch hot surfaces.
- To protect against electrical hazards, do not immerse motor unit or cord plug in water or other liquids. Never use outdoors or on wet surfaces.
- Keep away from the moving parts. Do not insert finger, knife etc. in feeder opening while in operation or in motion.
- Do not remove or replace any attachment or attachment cover when the motor is ON.
- Switch off the motor, if it stalls or smoke emanates from the motor.
- Cutters of Cutter Spinner (filter) are sharp, handle carefully while fixing, removing or cleaning the Cutter Spinner.
- Keep Machine away from direct heat or sun. Never wash the parts in hot water.
- Do not run the machine unless juice container is in position. Cover and clamps should be firmly placed too.
- Do not run the motor for more than 90 minutes continuously.

SPECIFICATIONS★

Model Type & No.	: SUJATA <i>POWERMATIC</i>
Motor	: Heavy duty, universal type 900 Watts with double ball bearing.
Power Supply	: 230 to 240 Volts. AC 50 - 60 Hz.
Power Consumption	: 900 Watts. on maximum load.
Rating	: 90 minutes.
Speed Control	: 3 Speed with Rotary action switch. : Whipper button for momentary motion.
Motor Speed	: No load speed maximum approx. 22000 R.P.M.
Protection	: Class I double insulated.
Flex Cord	: P.V.C. approx. 2.15 meters usable with 5 Amp. 3 pin plug.
Net Weight with Carton	: 5.0 Kg.
Dimensions (in Cms.)	: 37 X 36 X 23
Capacity	: Juicer Continuous (90 minutes)

★ Due to continuous upgradation in quality, design and specifications can be changed at any time without notice.

**ONE YEAR
WARRANTY**

**WARRANTY IS NOT VALID IF
THIS PRODUCT IS USED FOR
COMMERCIAL PURPOSE**

SUJATA *POWERMATIC*

is warranted against manufacturing defects for a period of ONE YEAR from the date of purchase. Within this period any defective unit will be repaired or replaced at manufacturer's option free of cost subject to the unit being **delivered to our authorized service centre at customer's cost.**

The warranty does not cover wear and tear of plastic/rubber components/cutter spinner (filter) and bush/ball bearings etc. and damages resulting from commercial use, accident, mishandling or negligence on the part of the customer or non-compliance of the instructions in the operating manual or if the mechanism is tampered with by the customer or any unauthorized person other than our service personnel.

The warranty card duly stamped and signed by the dealer alongwith the cash memo should be produced to the authorized service centre, otherwise the warranty will be treated as invalid. Liability for consequential damages or loss is neither accepted nor implied under the warranty.

SUJATA *POWERMATIC*

Sr. No. Checked by

Cash Memo No. Date

Customer's name & Address

Customer's telephone

Signature of the Dealer

**RUBBER STAMP
OF
THE DEALER**

POWERMATIC



28022