

OPERATING MANUAL

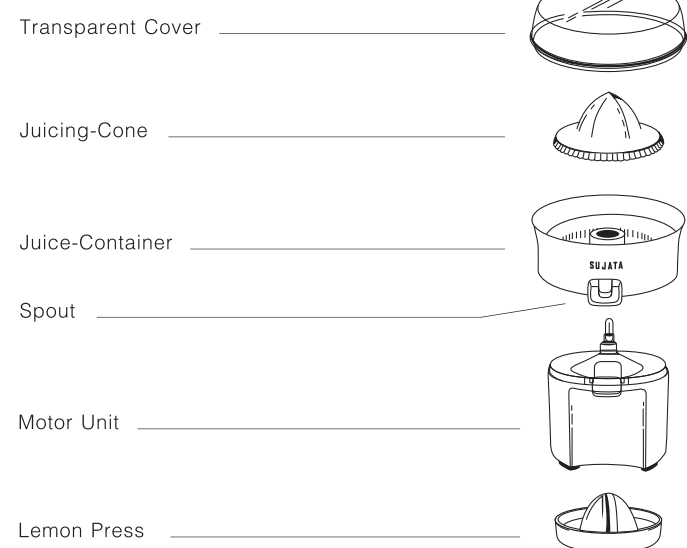


Congratulations for choosing the **SUJATA - Citromatic**. You will find it a great asset, giving you dependable performance year after year. Beginning with the heavy-duty motor, every material and component is A-one. Made to the most demanding standards by perfectionists.

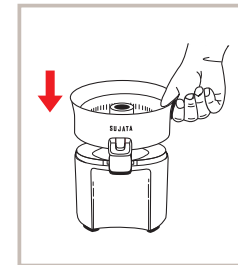
SUJATA - Citromatic is a hallmark of convenience. Press half-cut citrus fruit onto its Juicing-Cone. And it starts rotating. No switches. No electrical control over speed required. It adjusts its speed. Automatically. In relation to the pressure exerted on its Juicing-Cone. To give you glasses and glasses of juice, continuously without any interruption. Just keep replacing glass full of juice under its spout by empty glasses.

Release the pressure being exerted on its Juicing-Cone. And it stops. Automatically. How simple and safe. For even the children to operate. Generations ahead in convenience.

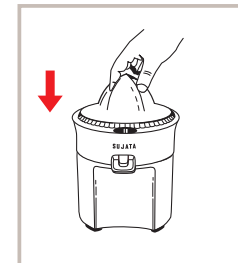
IDENTIFICATION OF PARTS



ASSEMBLING THE CITROMATIC

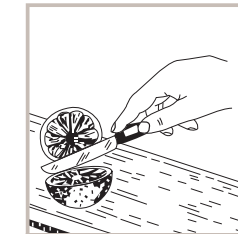


Place the Juice-Container on Motor Unit.

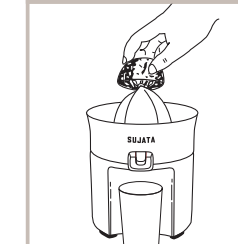


Fix the Juicing-Cone onto the shaft of Motor Unit. Now the Juicer is ready for use.

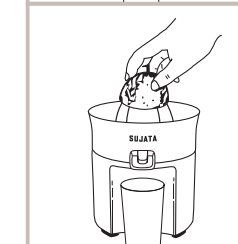
USING THE CITROMATIC



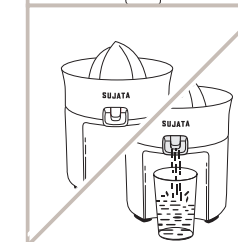
Cut the unpeeled citrus fruit horizontally into equal halves.



Place the Citromatic on a firm flat surface at convenient height. Make sure that the spout is in locked position (upwards). To obtain maximum juice, cup the fruit piece with your palm and fingers, and keep it pressed down holding the fruit firmly so as to exert uniform pressure on the Cone.



Press the cut fruit gently down onto the Juicing-Cone. The Juicing-Cone will rotate as long as you keep it pressed-down.

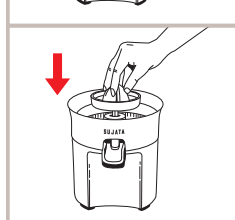


Place the glass / container under spout to collect the juice. Unlock the spout by pressing it downwards. The juice will flow into the container.

ASSEMBLING THE UNIT AS LEMON PRESS

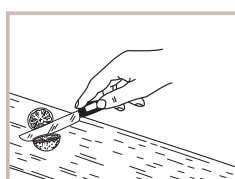


Place the Juice Container on Motor Unit.

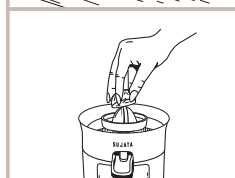


Fix the Lemon Press onto the shaft of Motor Unit. Now the Citromatic is ready to be used as Lemon Press.

USING THE LEMON PRESS



Cut the unpeeled lemon horizontally into equal halves.

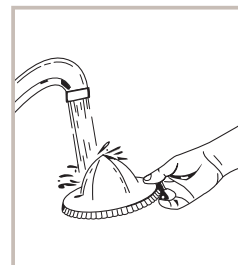


Place the Citromatic on a firm flat surface at a convenient height. Press the lemon half gently down onto the Lemon Press. The Citromatic will keep rotating as long as you keep it pressed down.



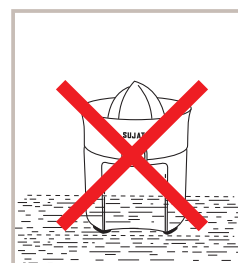
The juice will collect in the Lemon Press. Lift the Lemon Press from Citromatic for transferring the juice to an outside container.

CLEANING THE CITROMATIC



Wash the Cone and Juice-Container immediately after use. Since it is difficult to clean fruit pulp, once it has dried up. Use a mild detergent and a soft nylon brush if necessary.

After cleaning, wipe dry all parts, it should be wiped clean with a damp cloth if needed. Keep indoors, away from direct sunlight or heat.



Never immerse the base (Motor Unit) in water nor keep it under running water.

ONE YEAR WARRANTY

WARRANTY IS NOT VALID IF THIS PRODUCT IS USED FOR COMMERCIAL PURPOSE

SUJATA CITROMATIC

is warranted against manufacturing defects for a period of ONE YEAR from the date of purchase. Within this period any defective unit will be repaired or replaced at manufacturer's option free of cost subject to the unit being delivered to our authorized service centre at customer's cost.

The warranty does not cover damages resulting from commercial use, accident, mishandling or negligence on the part of customer or non compliance of the instructions in the operating manual or any unauthorized person other than our service personnel.

The warranty card duly stamped and signed by the dealer alongwith the cash memo should be produced to the authorized service centre, otherwise the warranty will be treated as invalid. Liability for consequential damages or loss is neither accepted nor implied under the warranty.

SPECIFICATIONS*

Model Type & No.	: SUJATA CITROMATIC
Power Supply	: 230 to 240 Volts. AC 50 Hz.
Power Consumption	: 40 Watts (on load).
Rating	: 15 Minutes.
Speed Control	: Single Speed.
R.P.M.	: 110
Protection	: Class II double insulated.
Capacity	: Continuous Juicing.

* Due to continuous upgradation in quality, design and specifications can be changed at any time without notice.



SUJATA CITROMATIC

Sr. No. _____ Checked by _____

Cash Memo No. _____ Date _____

Customer's name & Address _____

Customer's telephone _____

Signature of the Dealer _____

RUBBER STAMP OF THE DEALER